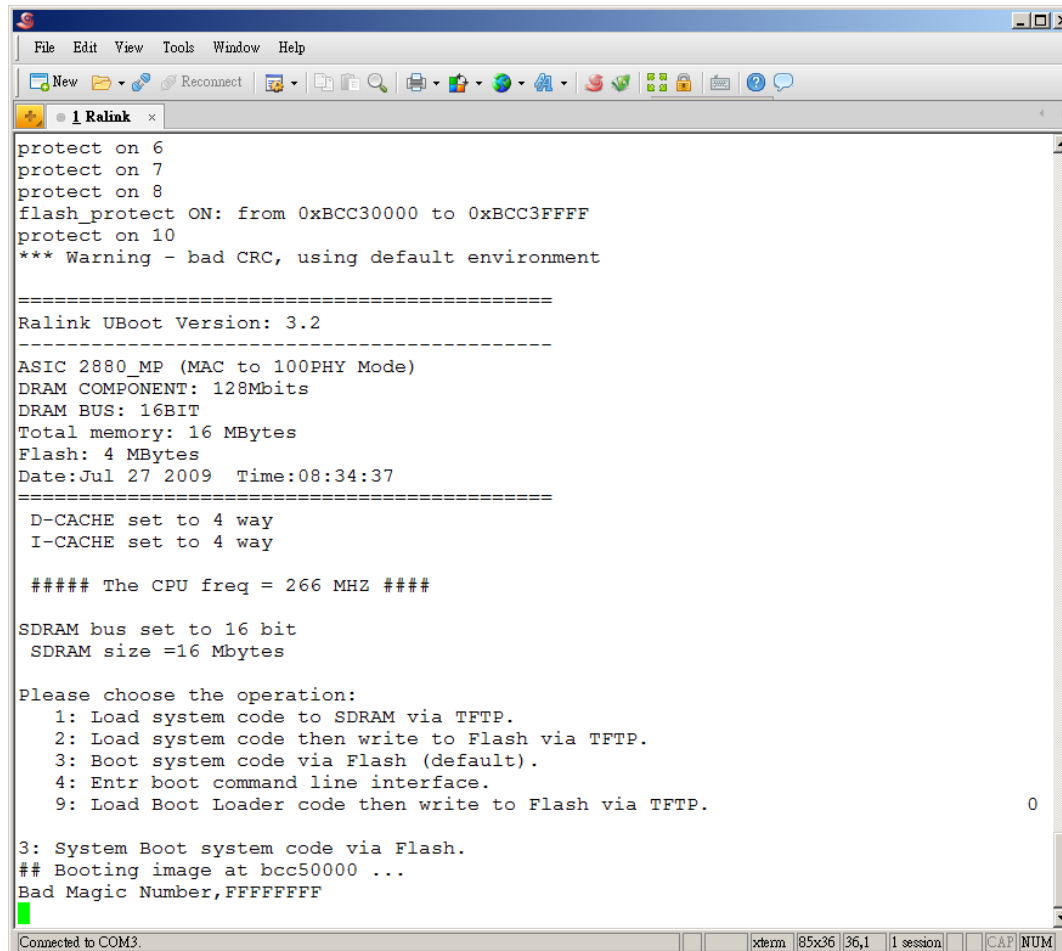


CPE OverTek OT-2618a

Modo de Recuperação do Firmware



```
File Edit View Tools Window Help
New [Icons] Recconnect [Icons]
1 Ralink x
protect on 6
protect on 7
protect on 8
flash_protect ON: from 0xBCC30000 to 0xBCC3FFFF
protect on 10
*** Warning - bad CRC, using default environment

=====
Ralink UBoot Version: 3.2
-----
ASIC 2880_MP (MAC to 100PHY Mode)
DRAM COMPONENT: 128Mbits
DRAM BUS: 16BIT
Total memory: 16 MBytes
Flash: 4 MBytes
Date:Jul 27 2009 Time:08:34:37
=====
D-CACHE set to 4 way
I-CACHE set to 4 way

##### The CPU freq = 266 MHZ #####

SDRAM bus set to 16 bit
SDRAM size =16 Mbytes

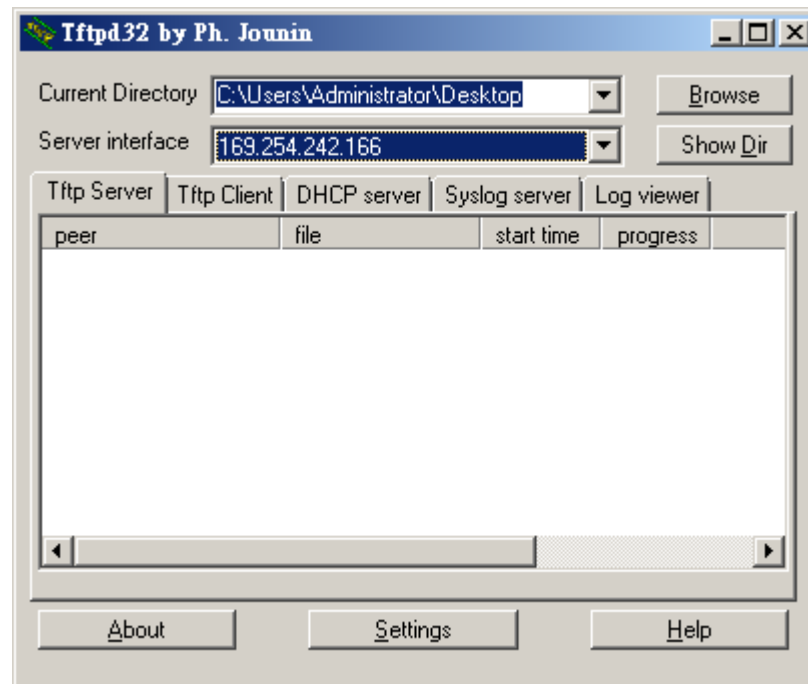
Please choose the operation:
 1: Load system code to SDRAM via TFTP.
 2: Load system code then write to Flash via TFTP.
 3: Boot system code via Flash (default).
 4: Entr boot command line interface.
 9: Load Boot Loader code then write to Flash via TFTP.

3: System Boot system code via Flash.
## Booting image at bcc50000 ...
Bad Magic Number,FFFFFFFF
█

Connected to COM3. xterm 85x36 36,1 1 session CAP NUM
```

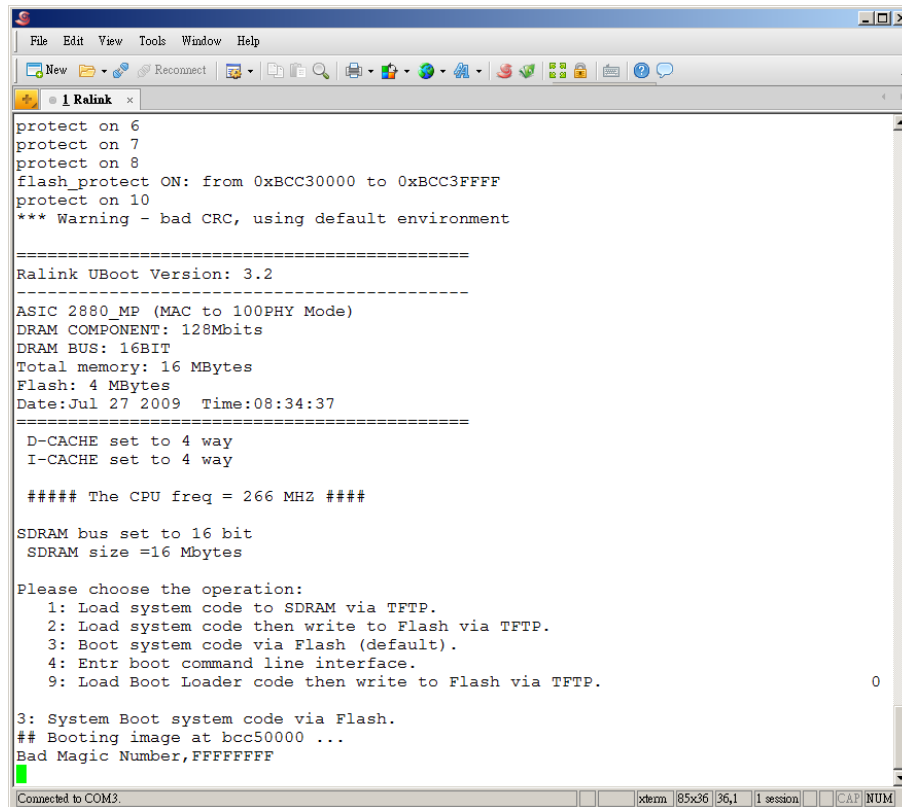
Será preciso um Servidor TFTP Instalado e Configurado

TFTP Server



Emulador de Terminal (console).

Xshell



```
File Edit View Tools Window Help
New Reconnect
1 Ralink
protect on 6
protect on 7
protect on 8
flash_protect ON: from 0xBCC30000 to 0xBCC3FFFF
protect on 10
*** Warning - bad CRC, using default environment

=====
Ralink UBoot Version: 3.2
-----
ASIC 2880_MP (MAC to 100PHY Mode)
DRAM COMPONENT: 128Mbits
DRAM BUS: 16BIT
Total memory: 16 MBytes
Flash: 4 MBytes
Date:Jul 27 2009 Time:08:34:37
-----
D-CACHE set to 4 way
I-CACHE set to 4 way

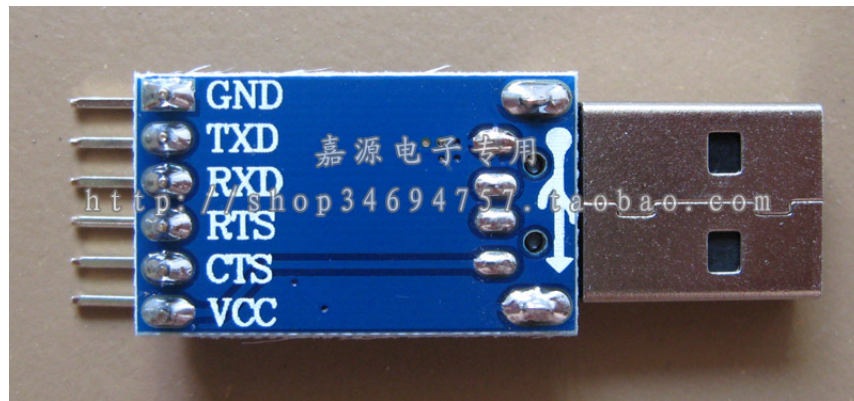
##### The CPU freq = 266 MHZ #####

SDRAM bus set to 16 bit
SDRAM size =16 Mbytes

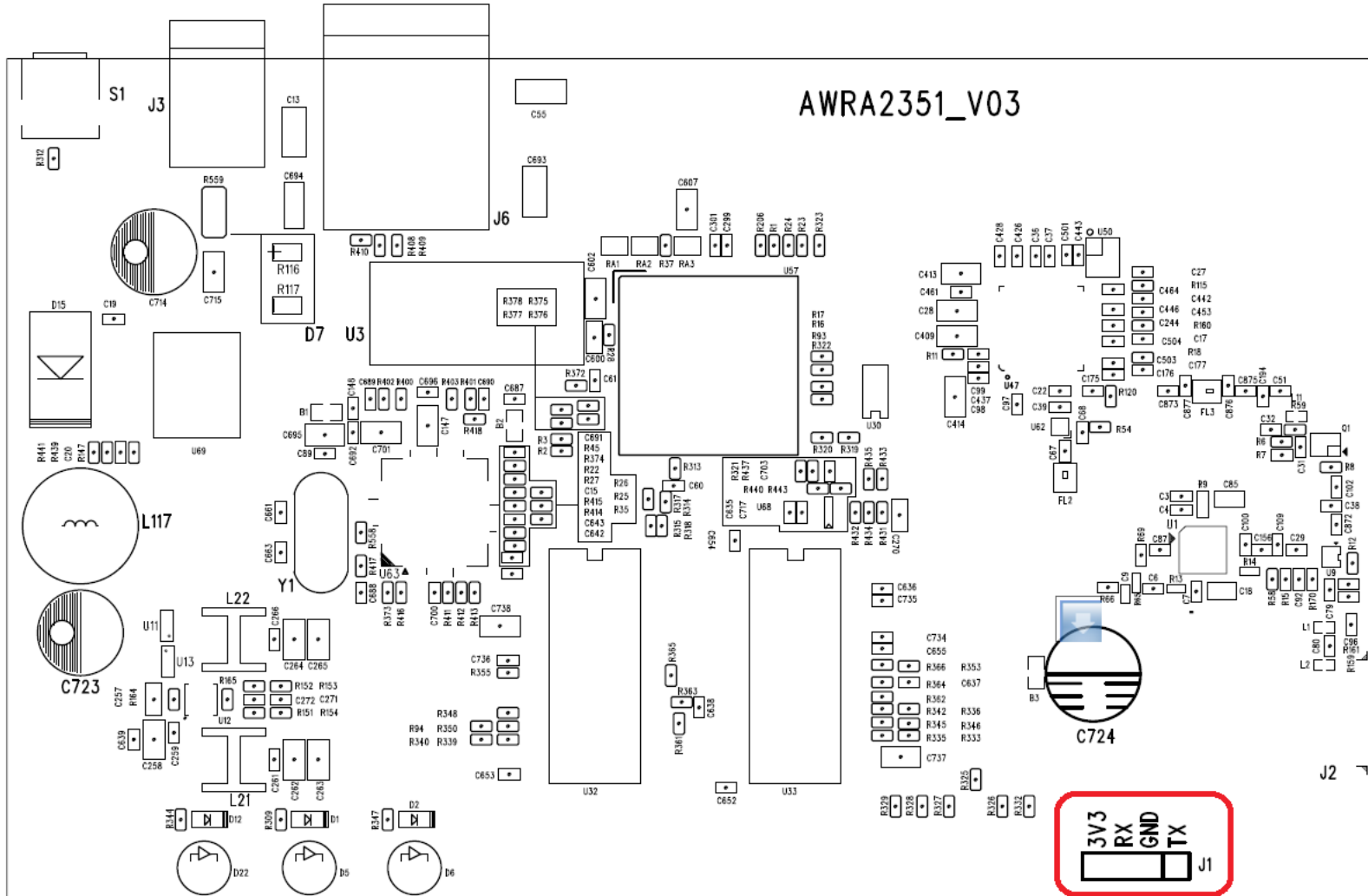
Please choose the operation:
 1: Load system code to SDRAM via TFTP.
 2: Load system code then write to Flash via TFTP.
 3: Boot system code via Flash (default).
 4: Entr boot command line interface.
 9: Load Boot Loader code then write to Flash via TFTP.

3: System Boot system code via Flash.
## Booting image at bcc50000 ...
Bad Magic Number,FFFFFFFF
█
Connected to COM3: xterm | 85x36 | 36,1 | 1 session | CAP NUM
```

UART



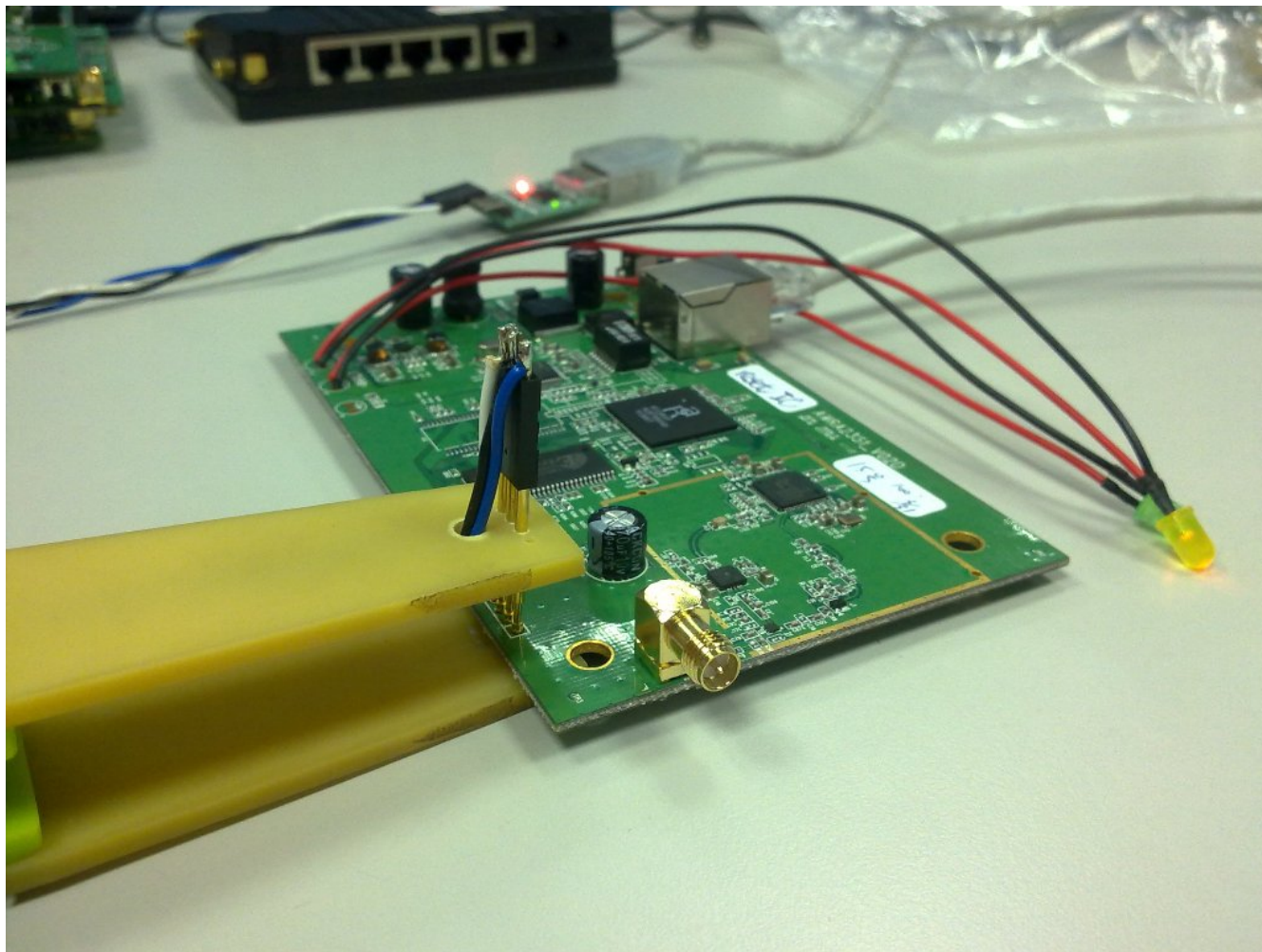
Conectar o UART no PC e na CPE



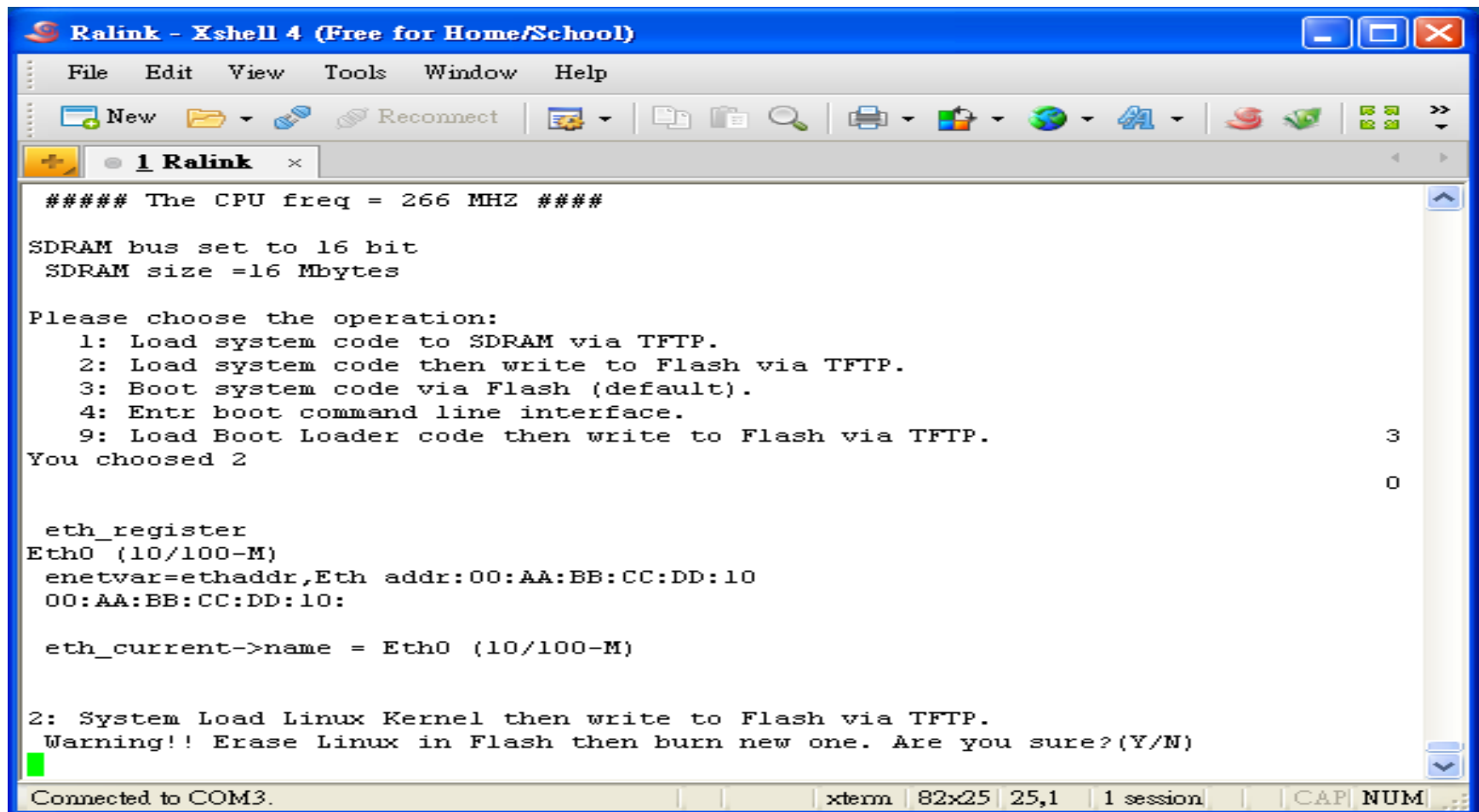
Conexão do UART

- RXD --- TXD
- TXD --- RXD
- GND --- GND

A imagem apresenta a forma correta de conectar.



Agora no Terminal, selecionar a “opção 2”



```
Ralink - Xshell 4 (Free for Home/School)
File Edit View Tools Window Help
New Reconnect
1 Ralink x
##### The CPU freq = 266 MHZ #####
SDRAM bus set to 16 bit
SDRAM size =16 Mbytes

Please choose the operation:
 1: Load system code to SDRAM via TFTP.
 2: Load system code then write to Flash via TFTP.
 3: Boot system code via Flash (default).
 4: Entr boot command line interface.
 9: Load Boot Loader code then write to Flash via TFTP.
You choosed 2

eth_register
Eth0 (10/100-M)
enetvar=ethaddr,Eth addr:00:AA:BB:CC:DD:10
00:AA:BB:CC:DD:10:

eth_current->name = Eth0 (10/100-M)

2: System Load Linux Kernel then write to Flash via TFTP.
Warning!! Erase Linux in Flash then burn new one. Are you sure?(Y/N)
█
Connected to COM3. xterm 82x25 25,1 1 session CAP NUM
```


Pressione 'y'

```
Ralink - Xshell 4 (Free for Home/School)
File Edit View Tools Window Help
New Reconnect
1 Ralink x
SDRAM bus set to 16 bit
SDRAM size =16 Mbytes

Please choose the operation:
 1: Load system code to SDRAM via TFTP.
 2: Load system code then write to Flash via TFTP.
 3: Boot system code via Flash (default).
 4: Entr boot command line interface.
 9: Load Boot Loader code then write to Flash via TFTP.
You choosed 2

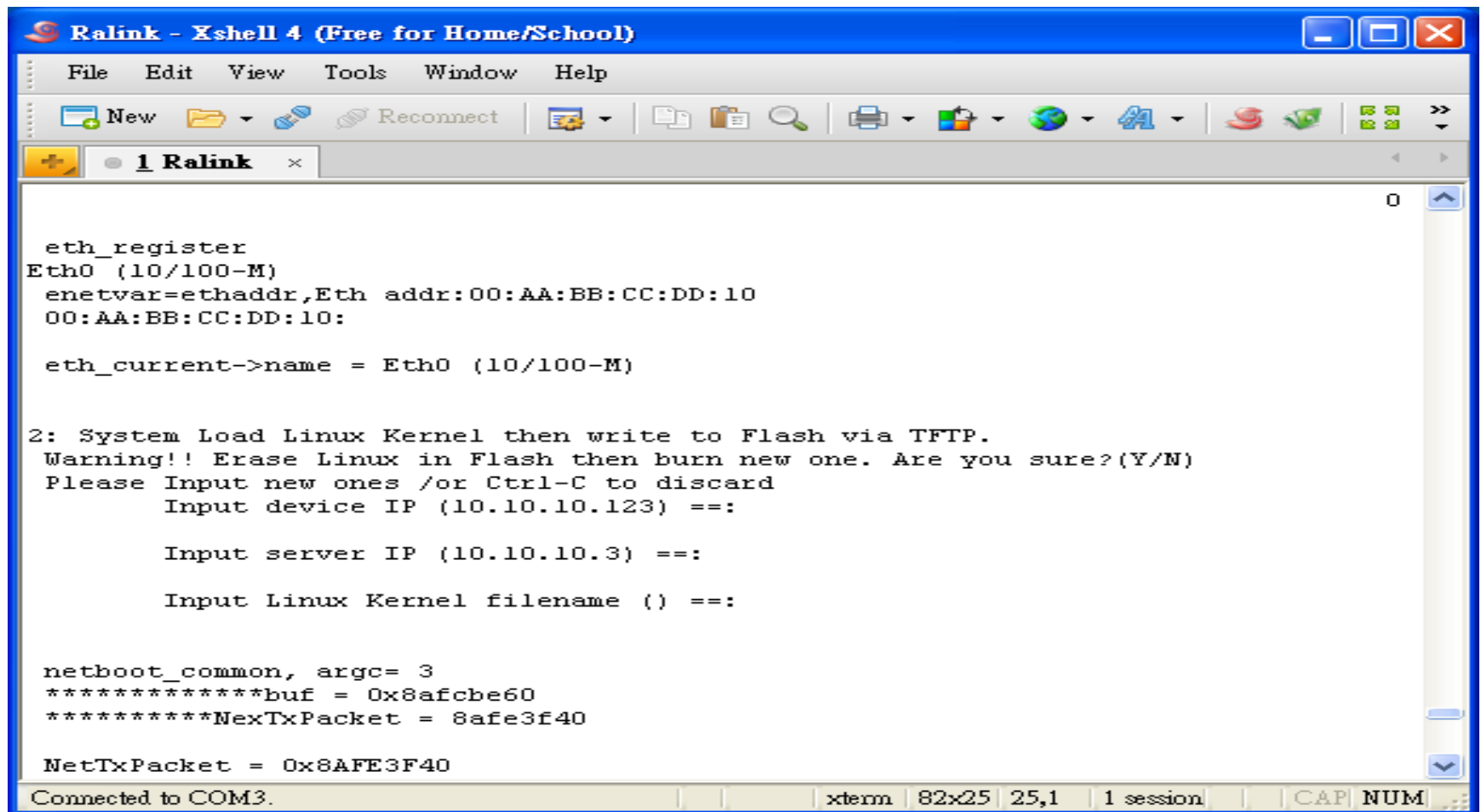
eth_register
Eth0 (10/100-M)
enetvar=ethaddr,Eth addr:00:AA:BB:CC:DD:10
00:AA:BB:CC:DD:10:

eth_current->name = Eth0 (10/100-M)

2: System Load Linux Kernel then write to Flash via TFTP.
Warning!! Erase Linux in Flash then burn new one. Are you sure?(Y/N)
Please Input new ones /or Ctrl-C to discard
Input device IP (10.10.10.123) ==:y
```

Connected to COM3. xterm 82x25 25,43 1 session CAP NUM

Informe os Ips corretos e o nome do arquivo (firmware).



The screenshot shows a terminal window titled "Ralink - Xshell 4 (Free for Home/School)". The terminal output includes the following text:

```
eth_register
Eth0 (10/100-M)
enetvar=ethaddr,Eth addr:00:AA:BB:CC:DD:10
00:AA:BB:CC:DD:10:

eth_current->name = Eth0 (10/100-M)

2: System Load Linux Kernel then write to Flash via TFTP.
Warning!! Erase Linux in Flash then burn new one. Are you sure?(Y/N)
Please Input new ones /or Ctrl-C to discard
Input device IP (10.10.10.123) ==:

Input server IP (10.10.10.3) ==:

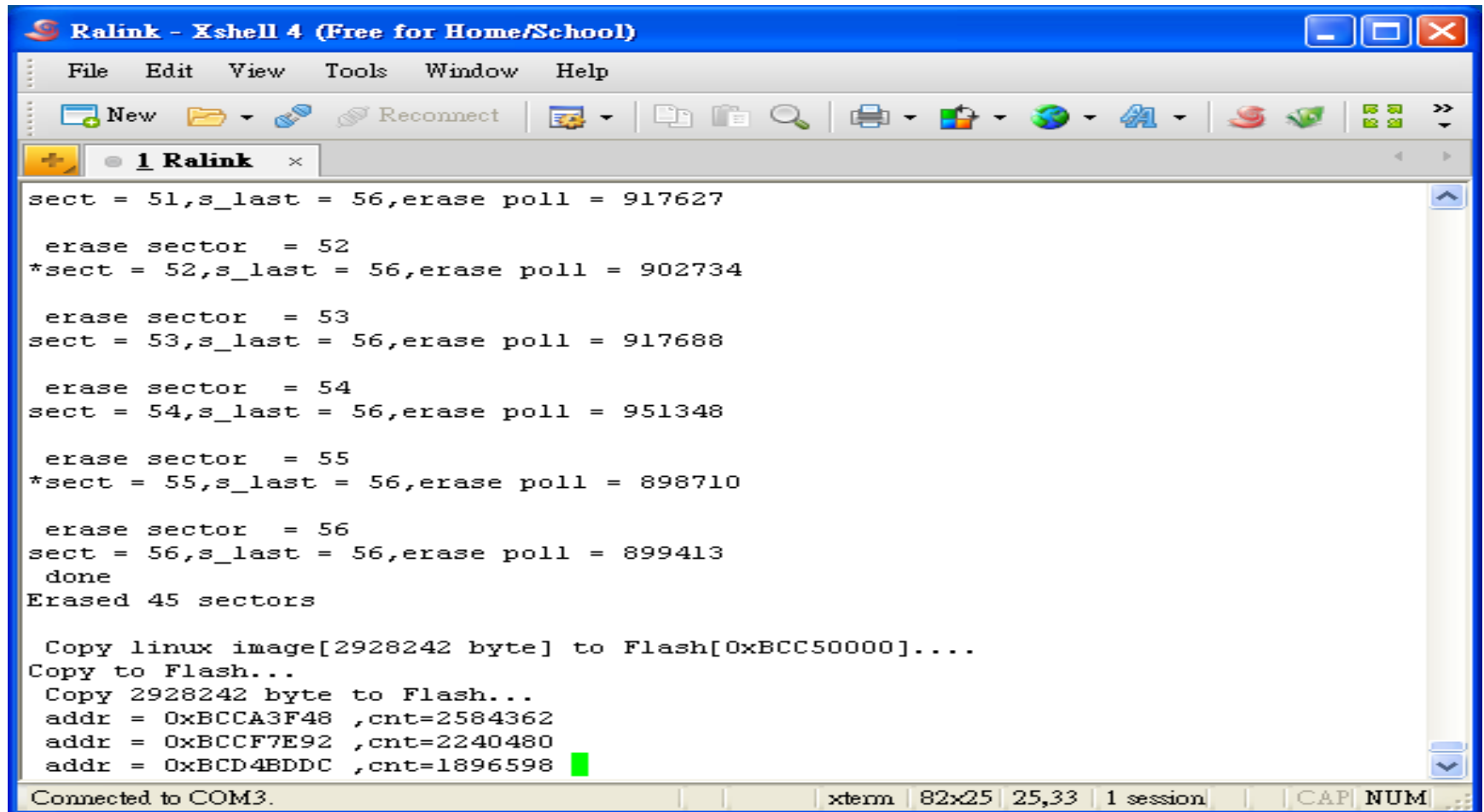
Input Linux Kernel filename () ==:

netboot_common, argc= 3
*****buf = 0x8afcbe60
*****NexTxPacket = 8afe3f40

NetTxPacket = 0x8AFE3F40
```

At the bottom of the terminal window, the status bar shows "Connected to COM3.", "xterm", "82x25", "25,1", "1 session", and "CAP NUM".

Aguarde o upload do Firmware



The screenshot shows a terminal window titled "Ralink - Xshell 4 (Free for Home/School)". The window contains the following text:

```
sect = 51,s_last = 56,erase poll = 917627

erase sector = 52
*sect = 52,s_last = 56,erase poll = 902734

erase sector = 53
sect = 53,s_last = 56,erase poll = 917688

erase sector = 54
sect = 54,s_last = 56,erase poll = 951348

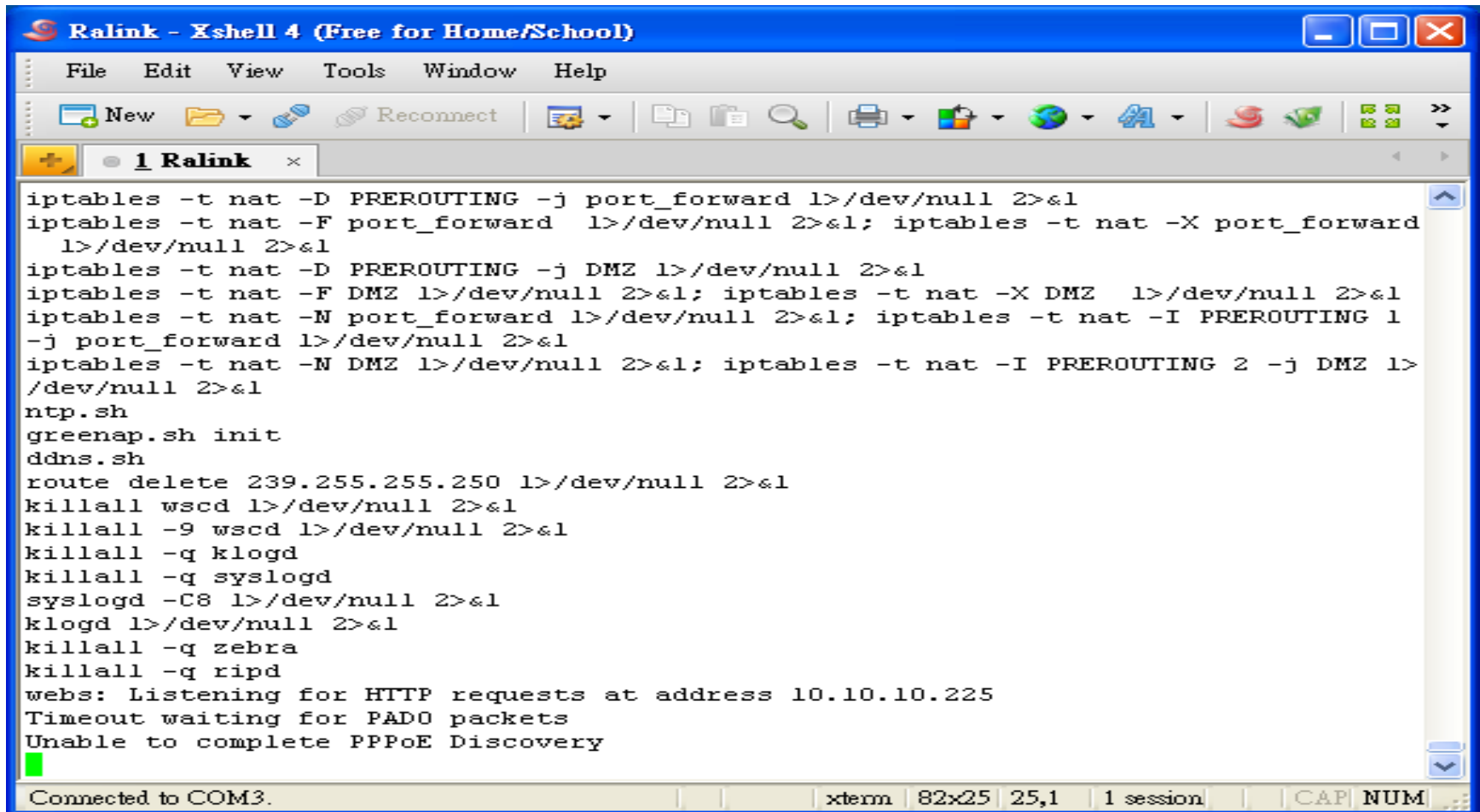
erase sector = 55
*sect = 55,s_last = 56,erase poll = 898710

erase sector = 56
sect = 56,s_last = 56,erase poll = 899413
done
Erased 45 sectors

Copy linux image[2928242 byte] to Flash[0xBCC50000]....
Copy to Flash...
Copy 2928242 byte to Flash...
addr = 0xBCCA3F48 ,cnt=2584362
addr = 0xBCCF7E92 ,cnt=2240480
addr = 0xB CD4BDDC ,cnt=1896598 █
```

At the bottom of the terminal window, the status bar shows "Connected to COM3.", "xterm", "82x25", "25,33", "1 session", and "CAP NUM".

Update concluído!



```
Ralink - Xshell 4 (Free for Home/School)
File Edit View Tools Window Help
New Reconnect
1 Ralink x
iptables -t nat -D PREROUTING -j port_forward 1>/dev/null 2>&1
iptables -t nat -F port_forward 1>/dev/null 2>&1; iptables -t nat -X port_forward
 1>/dev/null 2>&1
iptables -t nat -D PREROUTING -j DMZ 1>/dev/null 2>&1
iptables -t nat -F DMZ 1>/dev/null 2>&1; iptables -t nat -X DMZ 1>/dev/null 2>&1
iptables -t nat -N port_forward 1>/dev/null 2>&1; iptables -t nat -I PREROUTING 1
-j port_forward 1>/dev/null 2>&1
iptables -t nat -N DMZ 1>/dev/null 2>&1; iptables -t nat -I PREROUTING 2 -j DMZ 1>
/dev/null 2>&1
ntp.sh
greenap.sh init
ddns.sh
route delete 239.255.255.250 1>/dev/null 2>&1
killall wscd 1>/dev/null 2>&1
killall -9 wscd 1>/dev/null 2>&1
killall -q klogd
killall -q syslogd
syslogd -C8 1>/dev/null 2>&1
klogd 1>/dev/null 2>&1
killall -q zebra
killall -q ripd
webs: Listening for HTTP requests at address 10.10.10.225
Timeout waiting for PADO packets
Unable to complete PPPoE Discovery
Connected to COM3. xterm 82x25 25,1 1 session CAP NUM
```