

OLT OverTek OT-2000S

1 Brief Introduction

OT-2000S is system terminal platform, it is combine with the advanced industrial design, manufacturing technology by mini designing. Which is high reliability, flexible, easy maintain. It can support 8 GE-PON PON ports and connect 512 remote ONU mostly (by 1:64 splitter), and provides 8 GE optical/electrical uplink interfaces. OT-2000S can be applied to FTTB/FTTP/FTTH access solutions.



2 Function Specifications

Model	Description	Remark
OT-2000C	2U,19" OLT chassis	Default Configuration: Double 220VAC Power supply module, a group of 4 fans, dust-proof gauze
OT-2000M	OLT Switch Control Module	Each OIT chassis installs only one SCU,In NMS slot of OT-2000C Chassis
OT-2002T	OLT PON card with 2 Pon ports	install in OT-2000C chassis, each chassis should install at least one Pon card,4 pon cards at most.
OT-2014T	OLT PON card with 4 Pon ports	install in OT-2000C chassis, each chassis should install at least one Pon card,4 pon cards at most.
OT-2000P-220VAC	220V AC power supply module	

OT-2000-48VDC	48V DC power supply module	
OT-2000F	4 *fans in OT-2000C chassis	accessory
OT-EOLT-SFP-PX20	EPON OLT SFP for pon port ,	installed in PON card OT-2002T or OT-2104T
OT-SFP-GTX	10/100/1000M auto negotiable electric	Optional
OT-SFP-GFX-xxx	1.25G Optical SFP,used for uplink optic port	Optional,elected by different distance

2.1 OT-2000S Chassis

Parameters	Specifications	Parameters	Specifications
Model	OT-2000C	PON Card Slot Num	4
Main Card Slot Num	1	Power Module Num	2
Fan Slot Num	1	Dust Screen Num	1
Height	2U	Width	19 in
Depth	41.9cm	Weight	18kg
Hot-Plug	Support	Working Temperature	0°C~50°C

2.2 Main Card

Parameters	Specifications	Parameters	Specifications
Model	OT-2000M	Position	In NMS slot of OT-2000C Chassis
Main Function	Layer2 switch and management	Upstream Port Num	8
Upstream Interface Type	SFP	Upstream Interface Physical Type	10/100/1000BASE-T or 1000BASE-SX or 1000BASE-LX
Local Management Interface (Console)	Function: Local management with CLI Default Speed: 9600bit/s	Out Band Management Interface	Attachment Type: RJ45 Physical Type : 10BASE-T

LED	SNI	LNK:	MANAGE Interface	LNK: Light On: Link Up;
		Light On: Link Up; Twinkle: Traffic Flow		ACT: Twinkle: Traffic Flow
	Power	Light On: Power is Working	Alarm	CRI,MAJ:
		A,B,C,D: Light On: Fan is Working		Light On: Alarm is On
Supported Protocols				
Layer 2 Switch at Line Rate				
MAC Address Capacity:16K				
RSTP				
Link Aggregation (TRUNK)				
Port Based and IEEE 802.1Q VLAN				
QINQ				
Rate limit on Broadcast and Multicast				

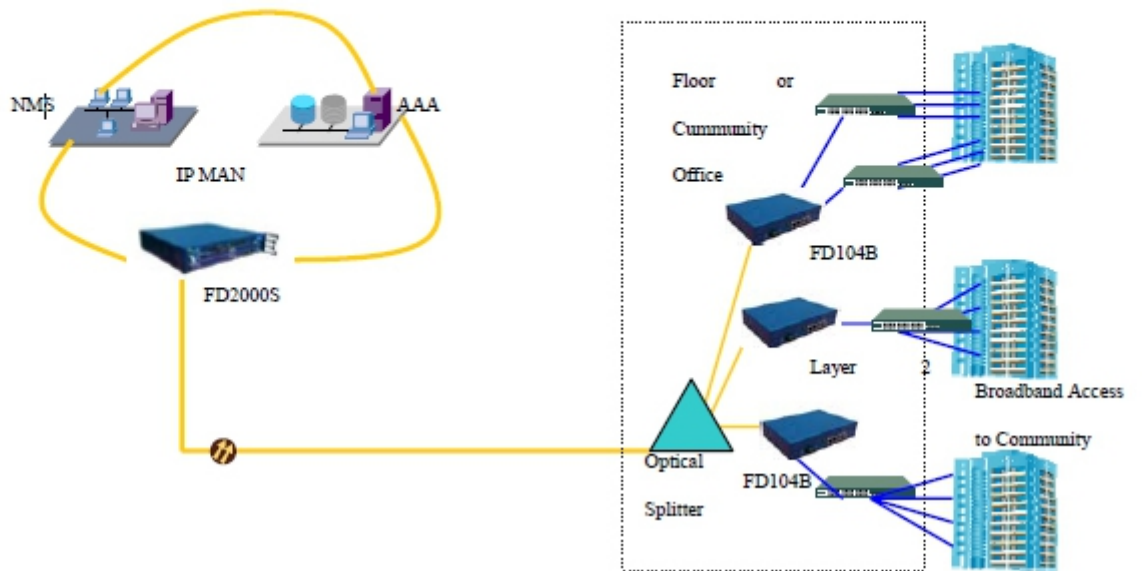
2.3 OLT Card

Parameters	Specifications	Parameters	Specifications
Model	OT-2002T	Position	In Pon Card Slot of OT-2000C Chassis
PON Port Num	2	LED	LNK:
Size	145mm(L)×253mm(H)×24mm(W)		Light On: ONU registered
Weight	1 kg		PWR: Light On: Power is Working
PON Port Parameters	Interface Type : SFP	Supported Protocols	ONU Authentication (Based on MAC Address)
	Physical Type : 1000BASE-PX20		Downstream Encryption (AES-128)
	Ratio of Path Split: 1:64(Max);		DBA
	Port Speed: Symmetric		IGMP Proxy (IGMP v1/v2)

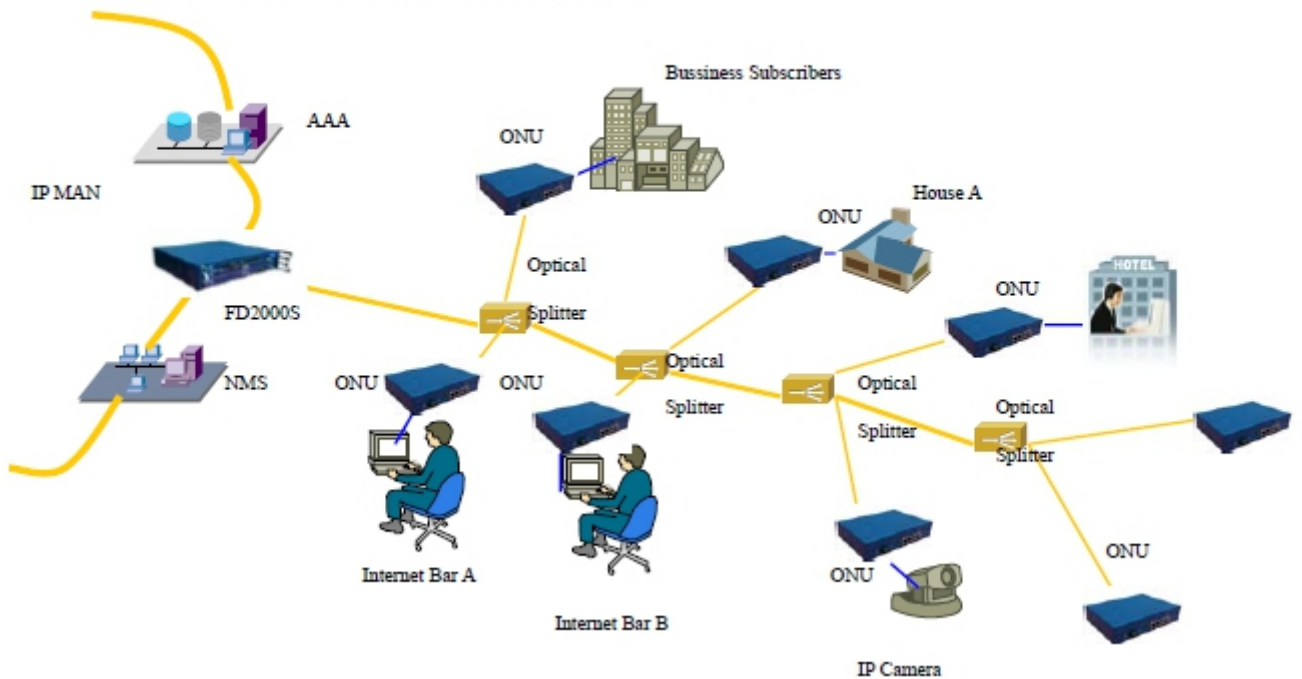
	Dynamic Distance Detection Precision: +/-16ns		ACL
	MACAddress Capacity : 4k		

3 Application

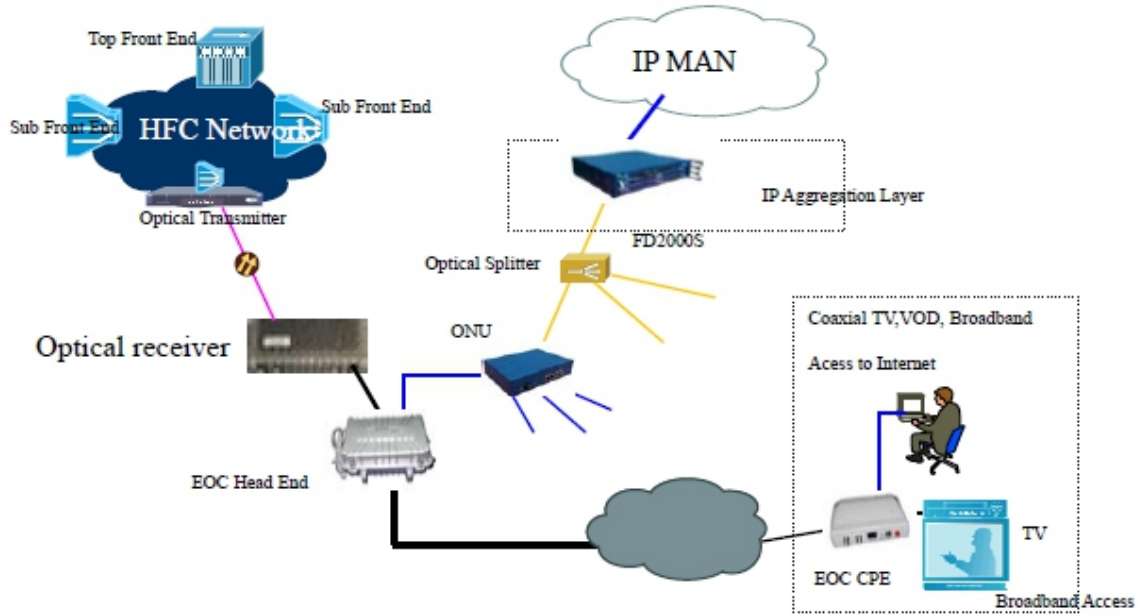
Carrier FTTB+LAN Solution



Carrier Key Account Access Solution



🚩 Broadcast Television HFC Bi-Direction Rebuild Solution



4. EMS Network management based on standard SNMP (Centralized management available for OverTek)

Device Information

Chassis Information

Power A	Open	Power B	Open
Fan A	Open	Fan B	Open
Fan C	Open	Fan D	Open
Temperature	31°C	Chassis Type	FD2000c
Factory Serial No	8886552211	Revision	FD2000C-2.1

System Basic Information

System Model	FD2000s	MAJ Alarm LED	OFF
CRI Alarm LED	ON	Alarm Description	
System Description	C-Data Fiber-Data Series EPON	System Location	Shenzhen C-Data Tech., Ltd.
System Contact	www.cdatic.com		

Refresh Set Save Config

2010-06-04 14:15:21 admin 查询[系统模型,MAJ告警灯,CRI告警灯,告警原因,系统描述,地点,联系方式,]成功; 设备:
06/04/2010 14:15:04 admin Query [System Model,MAJ Alarm LED,CRI Alarm LED,Alarm Description,System Description,System Location,System Contact] success; Device:

Trap Log Operation log

Current User:admin 06/04/2010 14:20:27 admin Query [System Model,MAJ Alarm LED,CRI Alarm LED,Alarm Description,System Description,System Location,System Contact] success; Device:

Control Card Management

Basic Information

Switch Card Type	FD2000s	Factory Serial	12345678
Hardware Revision	FD2000H-2.0	Software Version	FD2000M-SWE-2.0
Running Status	Normal	Running Time	0 hours, 9 minutes, 49 seconds

System Config

Console Port Speed	9600	IP Address	192.168.2.100
Network Mask	255.255.255.0	Gateway	192.168.1.1
Read Community	public	RW Community	private
Trap Receiver 1 IP Address	0.0.0.0	Trap Receiver 2 IP Address	0.0.0.0
Trap Receiver 3 IP Address	0.0.0.0	Trap Receiver 4 IP Address	0.0.0.0

Switch Mode Configure

Switch Mode: normal

Refresh Set Reset Default Save

06/04/2010 14:21:04 admin Query [Console Port Speed,IP Address,Network Mask,Gateway,Read Community,RW Community,Trap Receiver 1 IP Address,Trap Receiver 2 IP Address,Trap Receiver 3 IP Address,Trap Receiver 4 IP Address] success; Device:
06/04/2010 14:21:04 admin Query [Switch Card Type,Factory Serial,Hardware Revision,Software Version,Running Status,Running Time] success; Device:

Trap Log Operation log

Current User:admin 06/04/2010 14:21:04 admin Query [Switch Card Type,Factory Serial,Hardware Revision,Software Version,Running Status,Running Time] success; Device: